

Mass Spectrum SmartFormula Report

Analysis Info

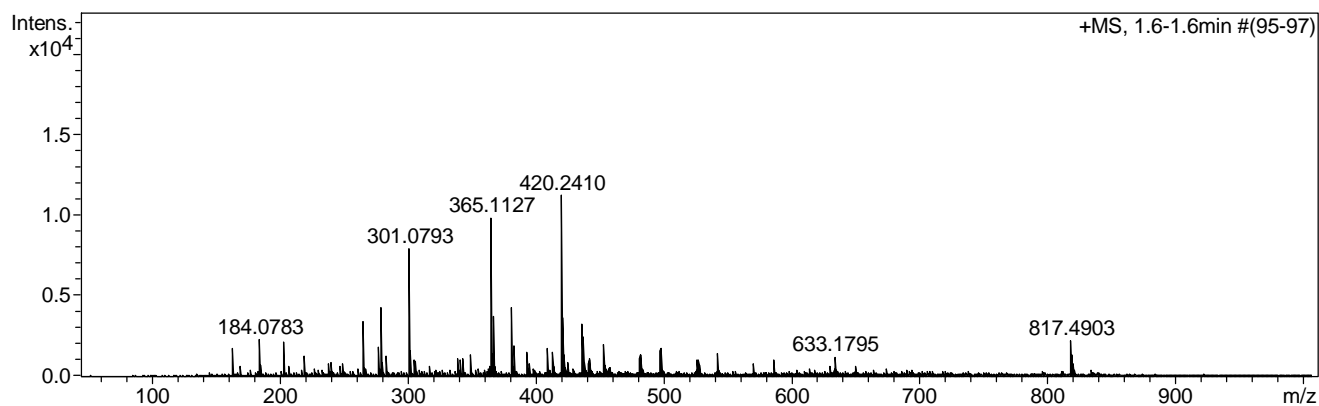
Analysis Name E:\Data2\Kilian\ZZY-B022-col-1-1-neg000002.d
Method Tune_low_pos.m
Sample Name ZZY-B022-col-1-1-neg
Comment

Acquisition Date 2019-02-07 10:11:52

Operator Carin Larsson
Instrument / Ser# microTOF 125

Acquisition Parameter

Source Type	ESI	Ion Polarity	Positive	Set Nebulizer	0.3 Bar
Focus	Not active			Set Dry Heater	180 °C
Scan Begin	50 m/z	Set Capillary	4500 V	Set Dry Gas	4.0 l/min
Scan End	1000 m/z	Set End Plate Offset	-500 V	Set Divert Valve	Source



Meas. m/z	#	Formula	Score	m/z	err [mDa]	err [ppm]	mSigma	rdb	e ⁻	Conf	N-Rule
249.0877	1	C 15 H 14 Na O 2	100.00	249.0886	0.9	3.6	198.3	8.5	even		ok
	2	C 8 H 14 N 6 Na O 2	0.00	249.1070	19.3	77.6	224.5	4.5	even		ok
	3	C 11 H 14 N 5 O 2	0.00	248.1142	-973.5	-3908.3	794.1	7.5	even		ok